

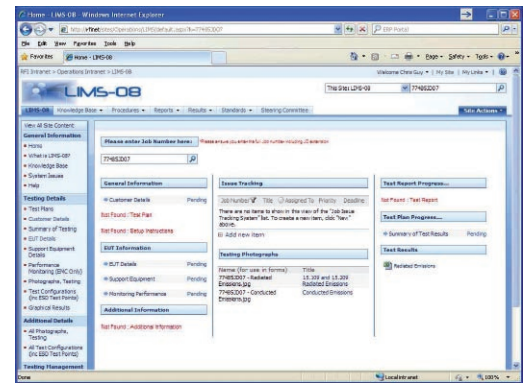
EMC SERVICES



Electromagnetic Compatibility Testing

We have been offering Electromagnetic Compatibility (EMC) testing and consultancy services for over 20 years. Our depth of expertise and high reputation gives our customers the confidence to trust us and our ability to help take products to market in even the most difficult situation.

As with all our services, our focus is on helping you to get your products to market in a timely and cost-effective manner. One of the ways we do this is by continually investing in test facilities, so that we have both the technical capabilities that are required for today's complex products and the capacity to handle peaks in demand.



Screenshot of the LIMS overview

Using Technology to Reduce the Cost of Approvals

RFI has expanded the Omnipass suite of tools to include LIMS (Laboratory Information Management System) offering the following benefits:

Test planning
Identifying your key deliverables

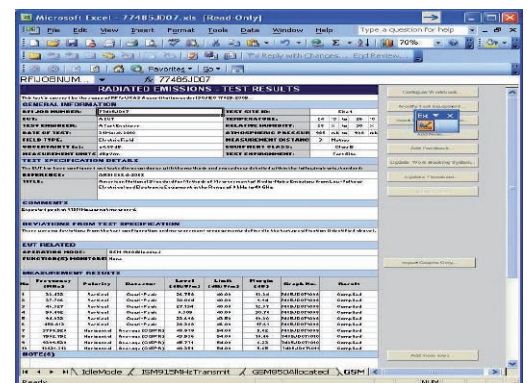
Test preparation
Helping you get ready

Customer portal
Providing you a window into your approval

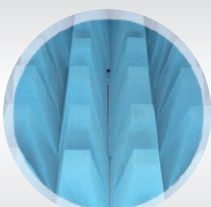
Automation
Streamlining your test

Reporting
Providing your test output in a world-wide accepted report

Availability
Less waiting to start testing



Example of LIMS result capture



Automotive



ITE Products



M2M



Railways



Wireless

EMC SERVICES



World Number One for M2M Integrations

RFI has been assisting on complex product approval since 2006 in the following applications:

- Telemetric and in-vehicle
- Vending retail and banking
- Connected building
- Smart metering
- Healthcare
- Security

Features	Benefits
Location Quick turnaround	Helps get your product to market quicker, which gets your product launched on time
Consultants / Expertise Lead Times	Helps to solve problems which enables you to make it simple
Efficiency State of the art facility Lead Times	Aims to help you reduce costs, to be able to launch your product on time
20 years experience = Number 1 for complex products	Makes it simple and reduces costs, which helps to launch your product on time!

Radio Performance



SAR



Bluetooth



Site Surveys

EMC Test Facilities

- Fully automated 5m hybrid chamber for radiated emissions testing
- 5m measurement distance with 8m height
- Fully NSA calibrated to FCC/ANSI and CISPR
- 3m, 2 tonne turntable calibrated for radiated immunity to EN 61000-4-3
- Five further screened rooms for R&D immunity and emission purposes. Transient and surge immunity testing laboratory

International Recognition

Our customers are typically looking for product approvals in a range of countries. RFI provides services under a range of global approval regimes, such as:

- European EMC Directive (2004/108/EC)
- European RTTE Directive (99/5/EC)
- European Automotive Directive (2004/104/EC)
- FCC regulations for the North American Market
- Industry Canada regulations

And many other product approval systems around the world

About RFI....

A global company, uniquely bringing together Smart Card, Mobile Payment, Wireless and Security Technologies.

RFI Global applies knowledge and experience to make you more profitable, by helping you to simplify product approval processes, reduce development and approval costs, and launch new products on time.

Please contact us for more information about RFI Global, a UL Company.

email: contactus@rfi-global.com

visit: www.rfi-global.com

or call: **+44 (0) 1256 312000** (Europe)
+1 (972) 342 8842 (Americas)

Head Office - Pavilion A, Ashwood Park, Ashwood Way,
Basingstoke, Hampshire RG23 8BG United Kingdom



ASK THE
EXPERTS